

# Annual Report

2018 - 2019



**Penrith  
Women's  
Health  
Centre**

## Contents

<b>Message from the Manager .....</b>	<b>3</b>
<b>About Us.....</b>	<b>4</b>
<b>Our Funding Partners and One off Grant Providers.....</b>	<b>4</b>
<b>Our Programs &amp; Services .....</b>	<b>5</b>
<b>Our Clients .....</b>	<b>6</b>
<b>Partnerships &amp; Supports .....</b>	<b>9</b>
Centre Groups and Workshops .....	10
Outreach Groups & Events.....	11
Active Network Participation .....	11
<b>Statistics &amp; Reports .....</b>	<b>12</b>
<b>Western Sydney Women's Domestic Violence Court Advocacy Service .....</b>	<b>14</b>
<b>Financial Reports .....</b>	<b>17</b>
<b>Performance &amp; Quality .....</b>	<b>20</b>

## Message from the Manager

I have had the privilege of being the Centre's Manager since May 2011. Overwhelmingly the sense my time here gives me is one of a very special place that provides women with care, compassion and hope. This extends not only to the women we support but also to the very dedicated workers here at the Centre.

One of our exciting highlights of the year has been the inclusion of the Miranda Project to our Centre. This case management service provides support to Women who have recently been released from prison or at risk of entering the justice system. The Case Workers who have resided with us since November 2018 support these Women in their integration back into community or advocate for Women to remain with their families. It is such a perfect fit to have the Miranda Project here with us. Both services are seeing very positive outcomes, the partnership is strong and successful.

There isn't a day that goes by where I don't hear laughter and sometimes tears from Women. Penrith Women's Health Centre is a place where stories, experiences and hope for a better life and future are the priority of our day to day goals. Our vision is to provide holistic health services within a feminist, social justice view of Women's health fostering well-being.

We believe that Women's health is determined by a broad range of social, environmental, economic and biological factors. We seek to link individual Women's experiences and their health needs to this overall social and cultural context.

Penrith Women's Health Centre is Women working for Women!! Our doors are open to past, current and future clients in the hope we are able to make a difference to you all.

Outgoing Workers	Incoming Workers
Susie D&FV Support Services Case Manager	Carol D&FV Support Services Case Manager
Sophie SHLV Case Manager	Marsha SHLV Case Manager
Elaine Counsellor	Youssy Counsellor
Fiona LCP CAS Team	Carlie Relief SHLV
Lisa Office Administrator	Julie & Kim CAS Team
Dr Alexandra McPherson	Wendy Volunteer
Thank you to all those who worked with us and warm welcome to those who joined our Team	Marissa, Kelly, Gail & Peta Miranda Project

Our Volunteer Management Committee elected at the 2018 AGM comprised of Gina Higham President, Kerry Dolaghan Secretary, Barbara Shorthouse Treasurer, Vanessa Donald-Smith, Deb Nikitin, Rebecca Tucker and Peggy Wilcox. The Team very much appreciate each Management Committee Member's willingness to give up their time and offer good Governance, support and guidance to Penrith Women's Health Centre.

Student Placements add so much to our Centre – thank you to all!

Amelia, Gabriela, Sahar & Nicole – Midwifery Students	Western Sydney University
Livia, Lily, Paige & Jessica – Medical Students	Western Sydney University
Andrea & Mojdeh – Health Promotion Students	Western Sydney University
Jasmine – Business Management	Benchmark College
Carlie – Community Services Student	Mt Druitt TAFE
Erin – Nursing Student	Western Sydney University

**Jane Gold**

## About Us

PWHC's objectives are to:

- Increase women's knowledge and skills regarding their own health and equip women for ongoing healthy lifestyle choices.
- Increase women's awareness, use of services and resources within the community that supports their own health/wellbeing/or the health/wellbeing of those close to them.
- Ensure that violence issues for women are addressed as core business.

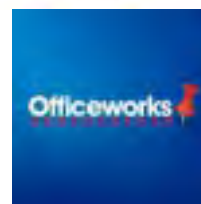
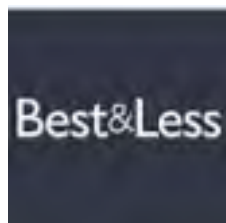
## Our Funding Partners and One off Grant Providers

Please accept our sincere appreciation to the following providers of funds that support the women in our communities.



NSW Health Nepean Blue Mountains Local Health District	Penrith Women's Health Centre's funding body
Legal Aid Commission	Western Sydney Women's Domestic Violence Court Advocacy Service's funding body
Family & Community Services NSW	Staying Home Leaving Violence funding body
Family & Community Services Women NSW	Domestic & Family Violence Support Services funding body
Stronger Communities Grants	Internal painting to PWHC premises - thanks to Emma Husar MP

To our generous donors below who provide material aid and those individuals who financially donate to Penrith Women's Health Centre, sincere thanks is extended in the support of our Families.





## Our Programs & Services

### **INTAKE, INFORMATION & REFERRAL SERVICE**

- Intake, assessment, information and referral
- Pregnancy Options Referral Scheme

### **WELL WOMEN'S CLINIC**

- Nurse Practitioner
- Women's Health Practitioners

### **MASSAGE THERAPY CLINIC**

- Qualified Therapeutic Massage

### **CHILD CARE – OCCASIONAL**

- For women attending PWHC appointments and groups

### **CASE MANAGEMENT SERVICES**

- Staying Home Leaving Violence assists women and children who have experienced domestic violence to remain safely in their own homes without the violent person
- Domestic & Family Violence Support Services Case Management and referrals
- CALD Support and Case Management

### **MIRANDA PROJECT**

- Supporting women recently released from prison and diversionary options to keep women out of prison

### **COUNSELLING SERVICES**

- Domestic & Family Violence, Grief and Mental Health therapeutic counselling
- Counselling by a private Practitioner

### **TRAUMA COUNSELLING FOR WOMEN WHO HAVE EXPERIENCED CHILDHOOD SEXUAL ABUSE**

- Provided by the Rape and Domestic Violence Services Australia

### **COMMUNITY DEVELOPMENT**

- Ageing Population: Falls prevention Program
- CALD Women's Health & Exercise Programs

### **LEGAL CLINIC**

- Free legal advice provided by Women's Legal Services NSW

### **WORK DEVELOPMENT ORDERS**

- Casework Support for Women with fines

### **WESTERN SYDNEY WDVCS**

- Court Advocacy– Penrith, Mt Druitt
- CALD and Aboriginal Specialist Workers
- Mt Druitt & Penrith Local Coordination Points and Safety Action Meetings

### **STUDENT PLACEMENTS**

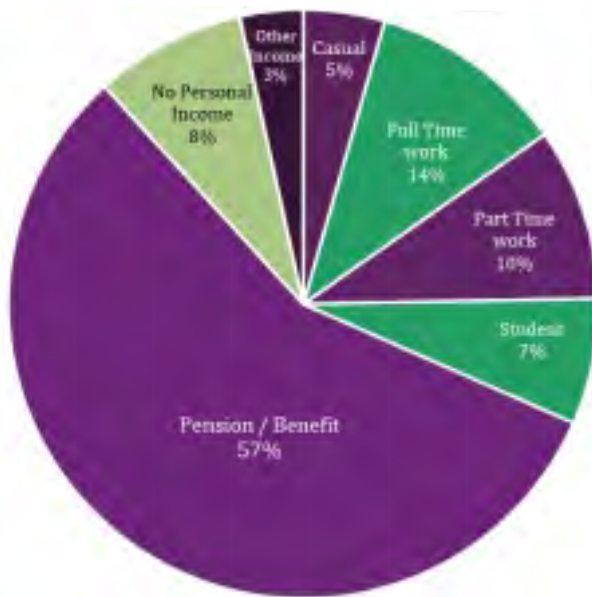


Our Team at 2019  
International Women's  
Day

*rest ~ reclaim ~ reignite*

## Our Clients – 2018/2019

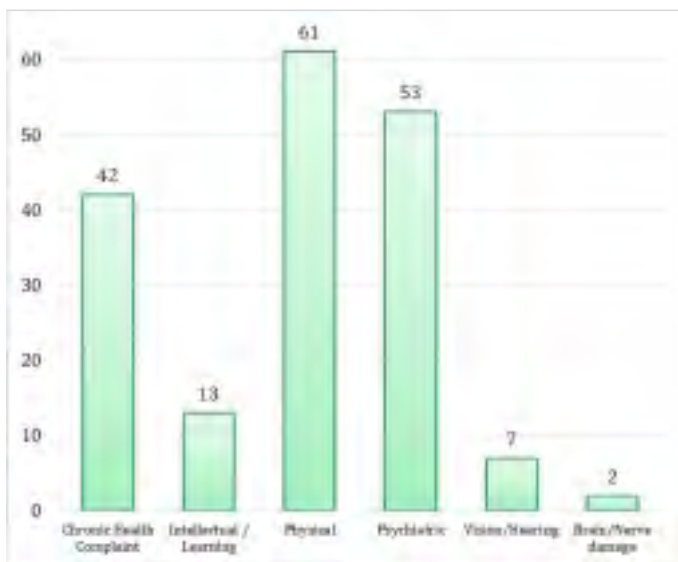
PWHC Socio Economic status



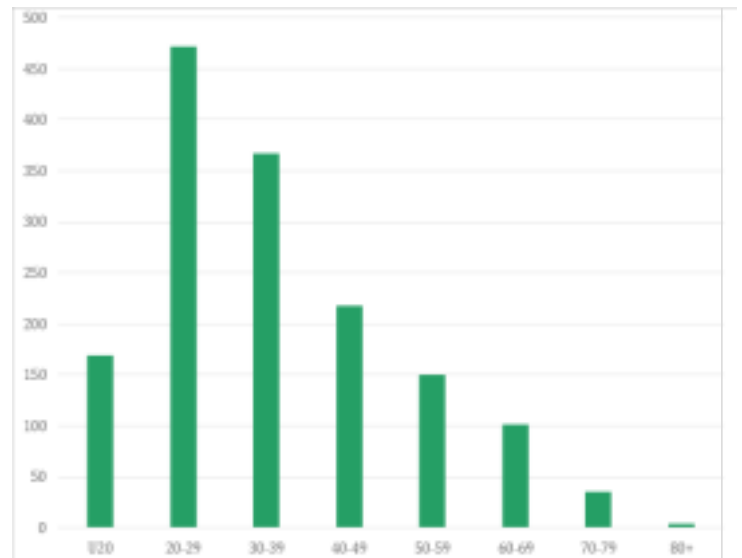
PWHC Recorded Ethnicity



Clients with Disability Access



Clients by age group



*rest ~ reclaim ~ reignite*



Wise Wonderful  
Women Group

## Main presenting health issues

PWHC Main Health Issues (presentations)	2018/19
Social/Cultural	2693
Mental Health	2472
Gynaecological/Reproductive/Breast Health	2322
Violence / Abuse	1892
Legal/Financial	1649
Medical General	1338
Relationships	814
Addiction (Drugs & Alcohol)	40



Indian Women's Information Session



Reclaim The Night March

## Overall Service Program Areas 2018/2019

Overall Service Program Areas	2018/19
Counselling	1350
Women's Medical Clinics	1231
Complimentary Health	437
Childminding	155
Legal Clinics	166
Domestic Violence Casework & Advocacy	12133
Groups & Health Promotion	4355
Emergency/Crisis Support	1113



**Indian Subcontinent  
Women's group  
information session  
with Dr Chris**

### ***Gabriela (WSU Bachelor of Midwifery Student)***

*Following my week of placement at Penrith Women's Health Centre, I wanted to send a big thank you to Jane, as well as all the staff and clients of your facility for the wonderful time I had. The hospitality I experienced from your staff was second to none, and everyone was so kind and friendly, answering any questions I had with enthusiasm. I appreciate everyone's eagerness to show me the clinic's capacities and go above and beyond in letting me observe their practice. I am also incredibly appreciative of the women who allowed me to observe their care received.*

*It's truly opened my eyes up to the world of Women's Health and has given me even more inspiration to continue giving women centred care to all I will encounter in my studies and future career.*

*I will always remember the lovely care from Penrith Women's Health!*

*rest ~ reclaim ~ reignite*



## Partnerships & Supports

We are pleased to work with and are grateful for the services provided by:

Penrith City Council Engagement in Community Events	International Women's Day, Stop DV Day, White Ribbon Day, Harmony Day, NAIDOC Week, Refugee Week & Seniors Week
Rape & Domestic Violence Services Australia	Counselling for adult females of childhood sexual abuse
Women's Legal Services NSW	Free Legal Clinic
Western Sydney Women's Domestic Violence Court Advocacy Service	Court support at Penrith & Mt Druitt Local Courts & Safety Action Meetings
Cara House	Wrapped In Angels groups for women and children
Victims Services	Counselling & Financial assistance for victims of crime
Access to Allied Psychological Services; LikeMind	Counselling – mental health
Dr Marie Stopes International	Pregnancy Advisory & Contraception Referral Service
NBMLHD Young Women's Clinic	Providing a venue for young women to access ante & post-natal care
Centrelink, Housing NSW & NBMLHD	Support for clients
NSW Police LAC of Penrith and St Marys	Support for clients
Western Sydney University	Student Placements from a variety of Faculties
Benchmark College & Mt Druitt TAFE	Student Placements from Business & Community Services
West Connect; Wentworth Housing ; Platform Youth & Mission Australia SHS; The Haven	Accommodation for homeless clients
Nepean Multicultural Access; SydWest; Penrith Migrant Multicultural Interagency; Startts; Transcultural Mental Health; NBMLHD Multicultural Health; Settlement Services International; Project 9	CALD support activities – groups & one off events
Telephone Interpreting Services & HealthCare Interpreter Services	Interpreting for medical appointments, clients & CALD group work
Nepean Community & Neighbourhood Services; Community Junction; Springwood Hub; The Haven & Zonta Club Nepean Valley	Partners in IWD and Community bus transport & other forums and events
LEAD, West Connect, BMWH&RC & IVPRS	Domestic Violence Forum
Justice Health	Clients from Bolwarra Transitional Centre
Community Restorative Centre	Miranda Program

### Client's feedback

*Thank you for being here for me in my toughest, scariest moments. Without your support I don't know where I would be. Your Service is invaluable and you've made a huge difference in my life.*  
Cristela

### Client's feedback

*I cannot thank Jo enough for her continuous support and compassion she has shown me since 2015 to the present. She truly has made me a stronger woman and I cannot thank her enough. Jo you deserve all the best in life – you really are a blessing.* Samantha

*rest ~ reclaim ~ reignite*

## Centre Groups and Workshops

Description	Number	Duration
Yoga and Zumba Classes	Weekly	Each Term
Wise Wonderful Women's Health & Wellbeing Group	Weekly	Each Term
Mindfulness Meditation	Weekly	Term 1 2019
Self Confidence & Relationships Group	Weekly	Term 2 2019
Indian Sub-Continent Women's Health Workshops	November	2018
CALD Women's Breast Screening Info session	August	2018
Art Group Drop In	Fortnightly	Terms 1&2 2019
Garden Group Drop In	Fortnightly	Terms 1&2 2019
Young Parents Health Service Talk	August	2018
<b>Older Women's</b>		
Seniors Rights Talk	July	Term 3 2018
Stepping On Falls Prevention Workshop	Weekly	
Domestic & Family Violence Group	Weekly	Term 2 2019



**Line Dancers  
performing at  
Harmony Day 2019**

**Breast Screen Talk**



### *Client's feedback:*

*Thank you everyone for everything you have done for me and my family. You helped me through my hard times when I needed someone.*



## Outreach Groups & Events

Description and Partners	Number	When
International Women's Day Event <ul style="list-style-type: none"> <li>• Penrith City Council</li> <li>• Nepean, St Clair &amp; Nth St Marys Neighbourhood Services</li> <li>• Nepean Multicultural Access (NMA)</li> <li>• Centrelink Multicultural Officer</li> <li>• SydWest</li> <li>• Care Pair</li> <li>• Zonta Club of Nepean Valley</li> <li>• The Haven</li> <li>• NBMLHD Multicultural Health</li> </ul>	1	March 2019
Peace of Mind Expo      Law Week NAIDOC Health Tent      Mental Health Week Expo Harmony Day      Women Alive Festival Refugee Week Celebrations	1	One off events
Domestic & Family Violence Forum	1	June2018
Mental Health In CALD Communities Forum	1	Oct 2018
Think Well Before You Vote Forum	1	Apr2019
Community Consultation – Indian Sub-Continent Women's Group	1	Oct 2018
Multicultural Women's Healthy Sleeping Workshop	1	Oct 2018
Multicultural Women's Excursion to Peace Of Mind Expo	1	Jul 2018
Multicultural Women's Diabetes Workshop	1	Sep2018
Community Engagement Kingswood Café	Weekly	Jan-Jun19
Maltese Women's Group Line Dancing & Well Being @ Llandilo	Weekly	Jul18-Jun19
Maltese Women's Mental Health workshop	1	Nov2018
Refugee Women's Swimming Lessons	Weekly	Jan-Jun19
Massage Course For Women	Weekly	Jul-Dec18
Menopause Community Workshop	1	Mar2019

## Active Network Participation

- Women's Health NSW Board Member (Manager)
- Rape & Domestic Violence Services Australia Chair (Manager)
- Nepean Domestic Violence Network
- Penrith Migrant Interagency
- Refugee Coalition
- Refugee Women's Health Network
- SHLV & DV Case Management Reference Group
- Community Consultation Meetings

*rest ~ reclaim ~ reignite*

## Statistics & Reports

21210 contacts were provided to women & children, a 7% increase on last year.

17655 individual contacts and 3555 group participants

Movement compared to previous year of 10% or less is considered stable.

Program	16/17	17/18	18/19	Comments
<b>PWHC funded Client Contacts</b>				
Counselling	932	949	722	-24% Recruitment period
Doctors	558	405	232	-43% Unsuccessful recruitment period
Nurse Practitioner	634	709	639	Stable
CALD Case Management	40	18	16	Stable
Massage	336	341	438	+28% Demand
Crisis Support & Intake	552	434	484	Stable
Pregnancy Options	188	357	704	+97% Demand
Childcare	329	260	179	-31% Volunteer recruitment period
Work Development Orders	23	63	106	+68% Demand
Domestic & Family Violence Support Services	328	393	285	-27% recruitment period
Staying Home Leaving Violence Program	800	524	791	+51% Demand
Western Sydney Women's Domestic Violence Court Advocacy Service Mt Druitt LCP & SAMs	6467	8777	10370	+18% Demand
Court Support Seconded Workers	300	320	0	New Worker training required
<b>Individual Client Group Contacts</b>				
Outreach Groups	550	647	522	-19%
Ongoing Groups	1235	1141	1698	+49%
Centre Workshops	469	173	309	+78%
IWD, Harmony Day, NAIDOC, Refugee Week; Stop DV Day; Law Week; DV Forum & Women Alive Festival	1517	1514	1026	-32% More effort on Centre Workshops & Groups
<b>PWHC Client Contacts Total</b>	<b>15258</b>	<b>17025</b>	<b>18521</b>	<b>+9%</b>
<b>PWHC Partner's Client Contacts</b>				
Childhood Sexual Abuse Trauma Counselling (R&DVSA)	147	126	162	+28%
Women's Legal Services Clinic Claremont Legal Clinic	155 78	130 5	166 0	+28% Firm closed
Private Practitioners Counselling	73	134	106	-20%
Victim Services Counselling	690	667	0	Counsellor relocated
Nepean Young Pregnancy Support Ante & Post Natal Clinic Counselling & Group Work	1760	1700	1580	Stable
Miranda Project Community Restorative Casework	2	2	675	Co-located at PWHC Oct 2018
<b>PWHC Partner Client Contacts Total</b>	<b>2905</b>	<b>2764</b>	<b>2689</b>	<b>Stable</b>
<b>Total Contacts</b>	<b>18163</b>	<b>19789</b>	<b>21210</b>	<b>+7%</b>



Elizabeth Everett AC  
with Miranda Team

Morning tea  
May 2019



International  
Women's Day 2019  
Steering Committee

*rest ~ reclaim ~ reignite*



## **Western Sydney Women's Domestic Violence Court Advocacy Service**

WSWDVCAS is part of a network of 29 community based Court Advocacy Services in NSW, funded by Legal Aid NSW. WSWDVCAS assists women and children in court proceedings for Apprehended Domestic Violence Orders (ADVOs) at Penrith and Mt Druitt Local Courts. WSWDVCAS also hosts the Penrith and Mt Druitt domestic violence Local Coordination Points (LCPs) and Safety Action Meetings (SAMs), as part of the NSW Government's domestic violence service delivery model, Safer Pathway. Under the NSW Justice Strategy, WSWDVCAS receives direct referrals from police for all female victims of domestic violence incidents in the Nepean and Mt Druitt Police Area Commands (PACs).

### **WSWDVCAS at court**

On ADVO list days, the service provides a holistic service to women and children victims of domestic violence. The WSWDVCAS team works with a roster of around 18 seconded workers from local agencies who provide face-to-face assistance to victims at the Penrith and Mt Druitt Courts.

Thank you to the following agencies and services who provide seconded workers to work with WSWDVCAS on ADVO list day: Penrith Women's Health Centre, West Connect DV Services, Western Sydney Family Referral Service, Nepean Community Neighbourhood Service, WASH House, Family Violence Service, NSW Health - Integrated Violence Prevention Response Service, Centacare Family Support and Elizabeth Project. The beginning of an ADVO list day is top heavy as clients all arrive within a 30-minute period. Fresh instructions/updates need to be attained and negotiated before court starts at 9.30am. We could not do this without the help of these workers.

Legal advice and representation is provided by practitioners on the Domestic Violence Duty Scheme funded by Legal Aid NSW. We'd like to thank Silvia Genevese, Nazira Sowad, Lang Goodsell, Marina Voncina, Jillian Morrison, Ngoc Le-Nguyen, Robyn Jackson, Avinash Singh and Women's Legal Services. They are an integral part of the team at court providing representation in court, legal advice, assisting with Parenting Plans and Directions Statements for our clients.

### **It Stops Here – Safer Pathway**

Safer Pathway is a whole-of-government response to provide a strategic, coordinated and timely approach to assisting victims of domestic violence. As part of the Safer Pathway, WSWDVCAS hosts the Mt Druitt Local Coordination Point (LCP) and the Penrith LCP.

LCPs receive referrals through an electronic platform, the Central Referral Point (CRP), from NSW Police for all female victims assessed as being either 'at threat' or 'at serious threat' of domestic violence. Those who have been referred are contacted by the LCP workers within 24 business hours and offered case coordination, specialist advice, court advocacy, assistance and referrals. Victims assessed as 'at serious threat' also come within the scope of a fortnightly Safety Action Meeting (SAM).

At the SAM, a team of designated decision makers from NSW Police, Health, Education, Corrections, and Family and Community Services, together with local non-government agency representatives, meet to exchange information and devise a coordinated safety action plan to implement on behalf of victims in order to mitigate the risk to their safety.

This reform has proved to be one of the best initiatives of government to address the ongoing safety of women and their children experiencing domestic violence. It has created strong partnerships between agencies, a better understanding of each other's roles, better outcomes for women and supports holding perpetrators accountable for their violence.

## WSWDVCAS and Prosecutor Pre-Hearing Clinics Sydney

WSWDVCAS and the Police Prosecutors Office work together to provide pre-hearing clinics at Mt Druitt Local Courts and in March we rolled these out at Penrith Local Court. These clinics are held monthly, with an invitation sent to all women who are protected persons in ADVO or charge matters with a defended hearing scheduled for the following month.

The clinics provide an opportunity for victims to hear information from a trained domestic violence prosecutor prior to their hearing date. Clients report they feel far more confident about giving evidence on the hearing date and are much better prepared for the ordeal of cross-examination. It has also helped us identify where interpreters are needed, further statements need to be made or charges laid.

## Partnerships & Supports

We are pleased to work with and are grateful for the services provided by:

Outerwest DV Network	Pacific Island Mt Druitt Action Network (PIMDAN)
Nepean DV Network	Syd West Multicultural Network
Western Sydney Legal Services Group	Penrith Koori Interagency
Stronger Foundations AMIHS NSW Health	Western Sydney Koori Interagency
LGBTIQ Interagency	Women's Business Health Meetings (NAIDOC)
	Nepean Blue Mountains Aboriginal Workers' Interagency

## Working for change – active network participation

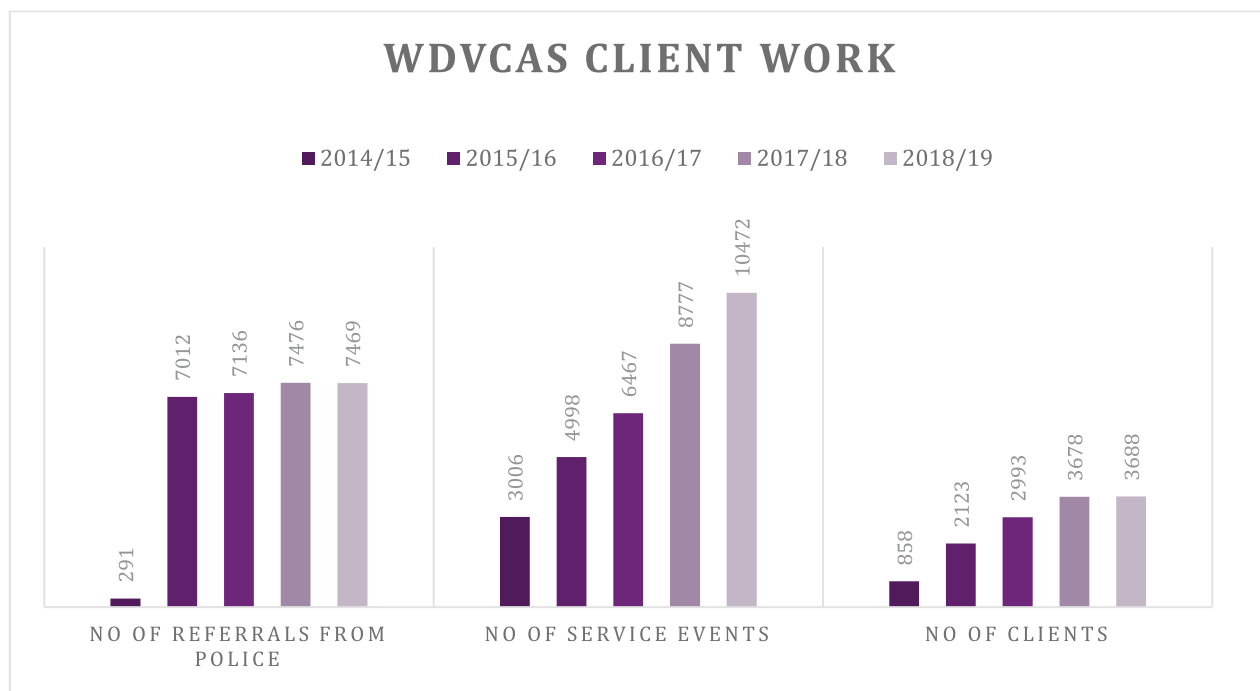
- Our Coordinator is Treasurer for our Peak Body the WDVCS NSW Inc
- Our Multicultural Specialist worker is Chair of WDVCS Multicultural Special Workers Network
- Partnered with Legal Aid to host a stall/BBQ for Law Week
- Attendance at Penrith and Mt Druitt Local Court User Forums
- Provided information sessions to NSW Police and TAFE students
- Presented at Sydney Region Aboriginal Corporation
- Refugee Week Mt Druitt
- Penrith City Councils 'Pop-Up' café aimed at reaching clients from CALD backgrounds
- NDVN's clients Christmas lunch sponsored by Outback Steakhouse Penrith
- Reclaim the Night Event Hawksbury
- Heart to Hand gathering for families impacted by DV homicide
- Women on Temporary Visa's project.



## WSWDVCAS statistics

Our statistics show the effect of NSW Domestic and Family Violence Reforms on our work over the last 4 years. July 2015 The Domestic Violence Justice Strategy commenced with referrals from NSW Police for every DV incident bringing a massive spike to our clients.

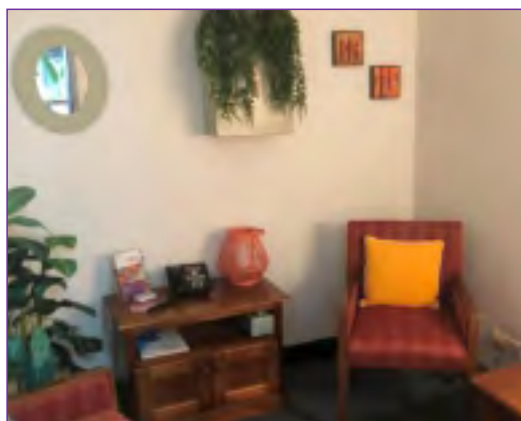
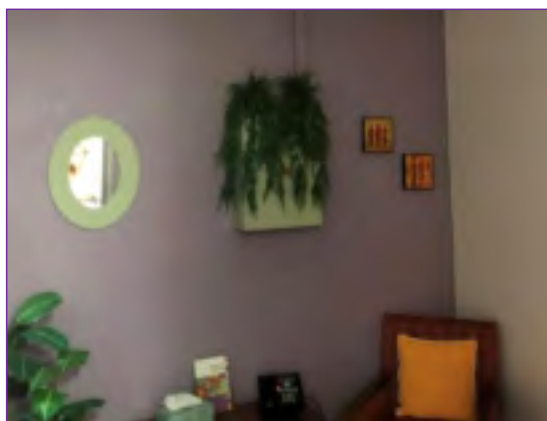
The Safer Pathway component commenced in Mt Druitt November 2016 and Penrith in September 2017 and is reflected in the increase in our client contacts and service events. Client numbers for this year remained the same, however service events jumped from 8,777 to 10,472 (19%) which is over 110% since the Safer Pathway roll out.



Cheryl Alexander

**WSWDVCAS Coordinator**

Before and after photos of the Internal Painting funded by Stronger Communities Grant





## Financial Reports

### PENRITH WOMENS HEALTH CENTRE INCORPORATED ABN 63 052 883 771

#### Committee's Report

For the year ended 30 June 2019

Your committee members submit the financial accounts of the PENRITH WOMENS HEALTH CENTRE INCORPORATED for the financial year ended 30 June 2019.

#### Committee Members

The names of committee members at the date of this report are:

Maria Hingham - Cunedo, President (leave of absence from 27th June 2019)

Vanessa Donald-Smith, Interim President (from 27th June 2019)

Barbara Shorthouse, Treasurer

Kerry Dolinghan, Secretary

Debra Nikitin

Rebecca Tucker (appointed 26th September 2018)

Peggy Wilcox (appointed 26th September 2018 - resigned 2nd May 2019)

#### Principal Activities

The principal activities of the association during the financial year were: provision of women's health and resources.

#### Significant Changes

No significant change in the nature of these activities occurred during the year.

#### Operating Result

The profit from ordinary activities amounted to

Year ended	Year ended
30 June 2019	30 June 2018
\$ 21,852	\$ 1

#### Auditor's Independence Declaration

A copy of the auditor's independence declaration as required under section 60-40 of the Australian Charities and Not-for-profits Commission Act 2012 has been included.

Signed in accordance with a resolution of the Members of the Committee on:



Vanessa Donald-Smith



Barbara Shorthouse

## Financial Reports

### **PENRITH WOMENS HEALTH CENTRE INCORPORATED ABN 63 052 883 771** **Auditor's Independence Declaration**

---

In accordance with the requirements of section 60-40 of the Australian Charities and Not-for-profits Commission Act 2012, I am pleased to provide the following declaration of independence to the Directors of Penrith Womens Health Centre Inc..

- a) No contraventions of the auditor independence requirements of the Australian Charities and Not-for-profits Commission Act 2012 in relation to the audit; and
- b) no contraventions of any applicable code of professional conduct in relation to the audit.



William Tomiczek & Associates

William Tomiczek P.T.P.A., Registered Company Auditor 1429

66 Emu Plains Rd Mt Riverview 2774

*rest ~ reclaim ~ reignite*

**PENRITH WOMENS HEALTH CENTRE INCORPORATED ABN 63 052 883 771**

**Statement by Members of the Committee**

**For the year ended 30 June 2019**

---

The Committee has determined that the association is not a reporting entity and that this special purpose financial report should be prepared in accordance with the accounting policies outlined in Note 1 to the financial statements.

In the opinion of the Committee the Income and Expenditure Statement, Statement of Financial Position, and Notes to the Financial Statements:

1. Presents fairly the financial position of PENRITH WOMENS HEALTH CENTRE INCORPORATED as at 30 June 2019 and its performance for the year ended on that date;
2. At the date of this statement, there are reasonable grounds to believe that the association will be able to pay its debts as and when they fall due;
3. the financial statements and notes satisfy the requirements of the Australian Charities and Not-for-profits Commission Act 2012.

This statement is made in accordance with a resolution of the Committee and is signed in accordance with subsection 60.15(2) of the Australian Charities and Not-for-profit Commission Regulation 2013 for and on behalf of the Committee by:



Vanessa Donald-Smith  
President



Barbara Shorthouse  
Treasurer

*rest ~ reclaim ~ reignite*



*rest ~ reclaim ~ reignite*

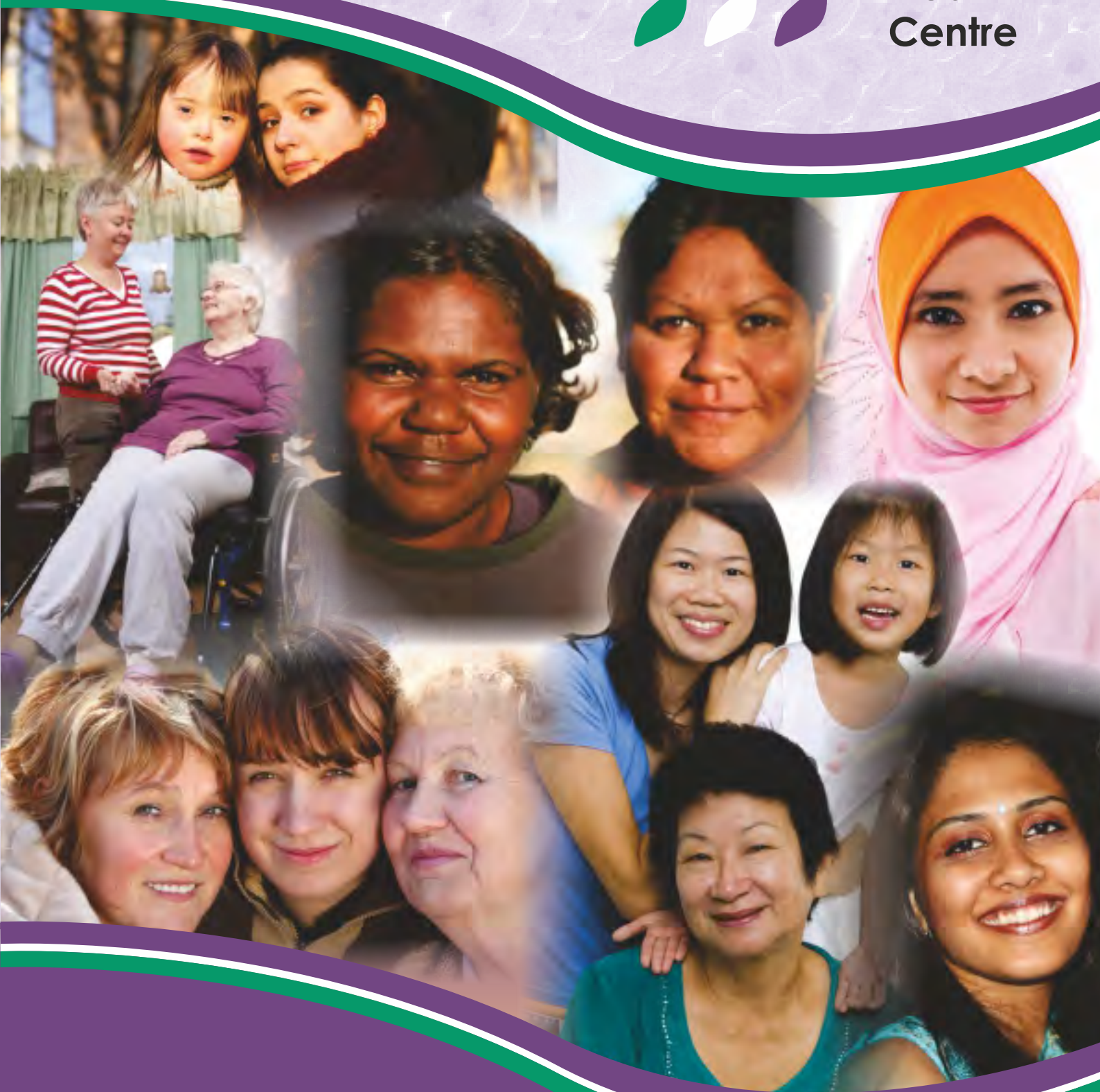








Penrith  
Women's  
Health  
Centre



*rest ~ reclaim ~ reignite*



**Penrith  
Women's  
Health  
Centre**

**Penrith Women's Health Centre Inc.**

129 Henry St

Penrith NSW 2750

PO Box 4094, Penrith Plaza Penrith

T 02 4721 8749

F 02 4731 1438

E [pwhcentre@pwhc.org.au](mailto:pwhcentre@pwhc.org.au)

[www.penrithwomenshealthcentre.com](http://www.penrithwomenshealthcentre.com)

